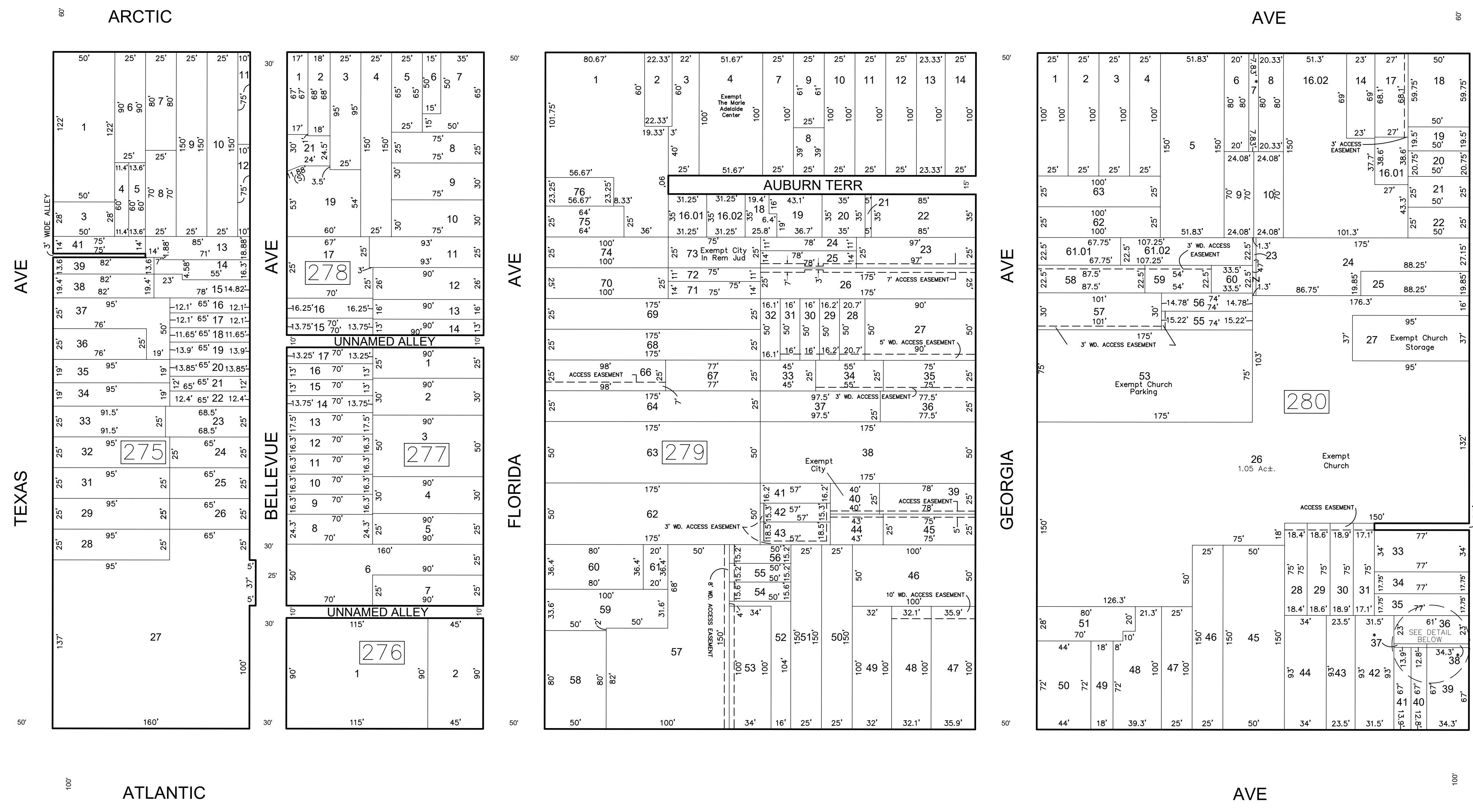
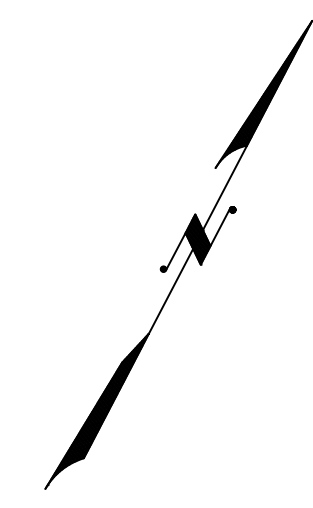


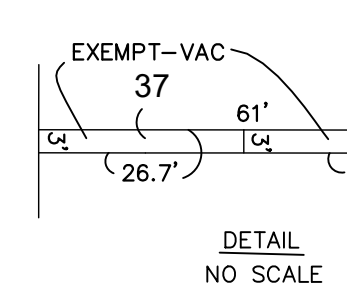
SHEET 59

REVISIONS				
DATE	BY	LIC. NO	BLOCK	LOT
08/2013	CHARLES A. ATKINSON	33994	279	1
08/2013	CHARLES A. ATKINSON	33994	279	16-17
11/2014	CHARLES A. ATKINSON	33994	279	4 & 6
11/2014	CHARLES A. ATKINSON	33994	278	19 & 20
03/2019	ED CLAY	34842	279	4 - 6
04/2019	ED CLAY	34842	275	40
04/2019	ED CLAY	34842	280	32



SHEET 45

SHEET 47



MISSISSIPPI AVE

LEGEND:

- * - Exempt Island; Blk 275, Lot 40
Blk 280, Lot 32
- * - Exempt City Vacant; Blk 280, Lots 7,37 & 38

SHEET 31

THIS SHEET HAS BEEN DRAWN USING COMPUTER AIDED DRAFTING/DESIGN (CAD/DO)

THIS MAP HAS BEEN GIVEN A FORMAL CERTIFICATION BY THE DIVISION OF TAXATION ON NOVEMBER 25, 1997, SIGNED BY WILLIAM H. BLACK, CTA AND ASSIGNED SERIAL NUMBER 778

TAX MAP
CITY OF ATLANTIC CITY
 ATLANTIC COUNTY, NEW JERSEY
 SCALE: 1" = 50'
JOSEPH M DOLAN, PLS, PP
 MUNICIPAL LAND SURVEYOR
 NEW JERSEY LICENSE NO. 23930
 OFFICE OF THE CITY ENGINEER
 603 CITY HALL
 ATLANTIC CITY, NEW JERSEY 08401